



# MONTHLY MEMBERSHIP PROGRESS REPORT

District 32 A

Results as of: 5/31/2016

GMT: HARVEY WHITLEY

LOCATION SOUTH CAROLINA

GMT CA 1

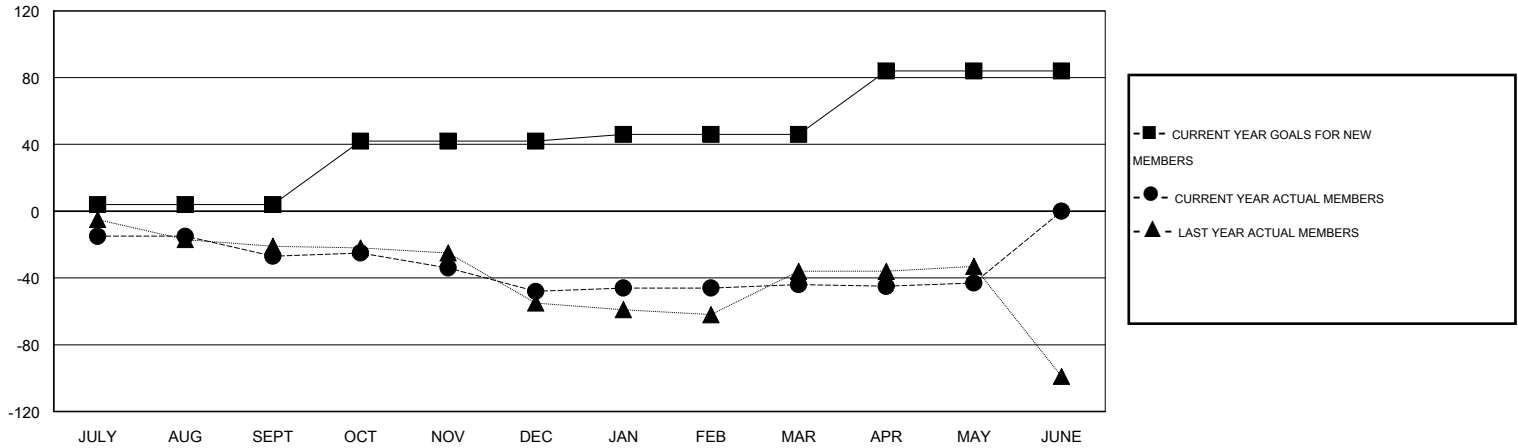
Clubs				
RESULTS FOR 2015-2016				
QUARTER	NEW CLUB GOAL	NEW CLUBS	DROPPED CLUBS	NET GAIN/LOSS
JULY/AUG/SEPT	0	0	0	0
OCT/NOV/DEC	1	0	0	0
JAN/FEB/MAR	0	0	0	0
APR/MAY/JUNE	1	0	0	0

Members				
RESULTS FOR 2015-2016				
QUARTER	NEW MEMBER GOAL	CHARTER AND NEW MEMBERS ADDED	DROPPED MEMBERS	NET GAIN/LOSS
JULY/AUG/SEPT	4	14	41	-27
OCT/NOV/DEC	38	12	33	-21
JAN/FEB/MAR	4	26	22	4
APR/MAY/JUNE	38	12	11	1

GOALS AND ACTUAL NEW CLUBS CUMULATIVE



GOALS AND ACTUAL MEMBERS CUMULATIVE



DROPPED CLUBS: 0
------------------

17 CLUBS OF 34 ADDED 1 OR MORE NEW MEMBERS

GENDER DISTRIBUTION	
MALE	679 (70.88%)
FEMALE	279 (29.12%)

DROPPED MEMBERS	
DECEASED	11
CLUB CANCELLED	0
OTHER	96
<b>TOTAL</b>	<b>107</b>

[CLICK HERE FOR HEALTH ASSESSMENT DATA](#)

FAMILY UNIT MEMBERS	231
HEAD OF HOUSEHOLD	113
NON-HEAD OF HOUSEHOLD	118